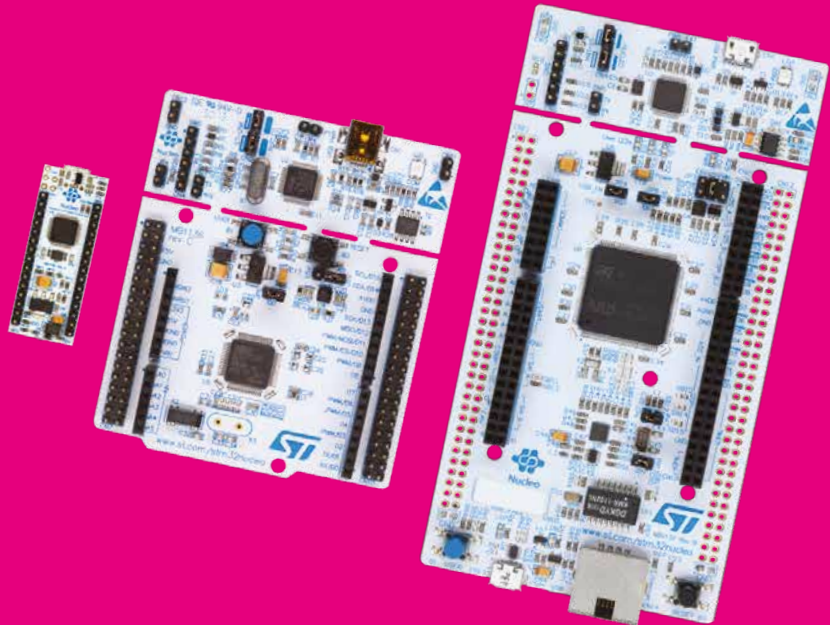


STM32 NUCLEO BOARDS



Unified scalable offering



Open STM32 development platform for flexible prototyping

The highly affordable STM32 Nucleo boards allow anyone to try out new ideas and to quickly create prototypes with any STM32 MCU.

STM32 Nucleo boards can easily be extended with a large number of specialized application hardware add-ons thanks to Arduino Uno Rev3 and ST morpho connectors on Nucleo-144 and Nucleo-64, ST Zio connectors on Nucleo-144, and Arduino Nano connectors on Nucleo-32.

Moreover, Nucleo boards integrate an ST-Link debugger/programmer, so there is no need for a separate probe. A comprehensive STM32 software HAL library together with various software examples are provided with STM32 Nucleo boards, and work smoothly with a wide range of development environments, allowing to build a complete application in only a few minutes.

KEY FEATURES

- Includes one STM32 microcontroller in a 32-pin, 64-pin or 144-pin package
- On-board ST-LINK debugger/programmer:
 - Virtual COM port
 - Mass storage
- Wide extension capabilities with specialized shields:
 - Arduino Uno rev3 connectors on Nucleo-64 and Nucleo-144
 - Access to a wider range of peripherals through Zio connectors on Nucleo-144
 - Access to all MCU pins through ST morpho connectors on Nucleo-64 and Nucleo-144
 - Arduino Nano connectors on Nucleo-32
- Direct access to Mbed online resources for most boards
- Supported by STM32CubeIDE, IAR, Arm Keil, Arm® Mbed™ online, and more IDEs

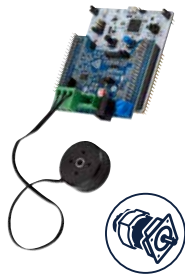
STM32 Nucleo development boards



www.st.com/stm32nucleo

STM32 Nucleo expansion boards

STM32 Nucleo development boards can easily be expanded through a variety of add-on boards. These expansion boards open the door to any type of application leveraging the appropriate mix of performance/peripherals/power within the comprehensive STM32 family.



P-NUCLEO-IHM03



P-NUCLEO-USB001 / USB002



I-NUCLEO-LRWAN1



X-NUCLEO-LPM01A

www.st.com/x-nucleo

Multiple IDE support



Free IDEs Note(*): free for STM32F0/G0/L0

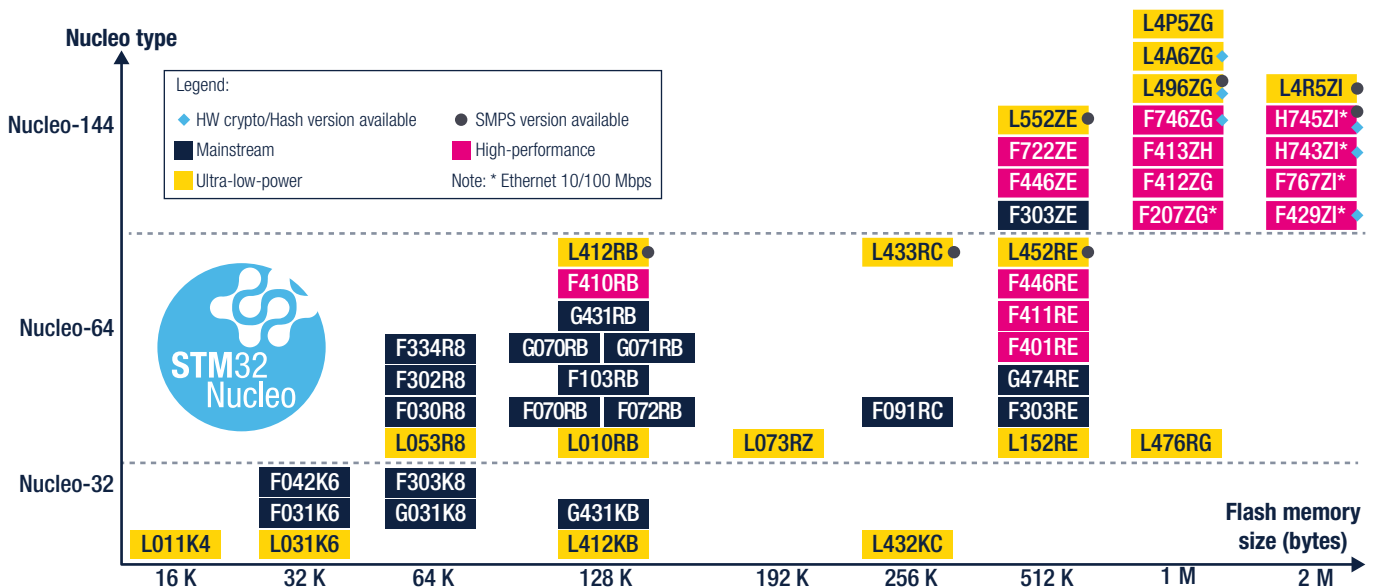
EMBEDDED SOFTWARE

STM32 Nucleo boards are supported in the corresponding STM32 MCU packages with many pre-configured example projects for IAR, Keil and AC6 SW4STM32.

- STM32Cube Expansion package available at www.st.com/x-cube
- STM32Cube MCU package available at www.st.com/stm32cubemcupack
- STM32CubeIDE is a free all-in-one multi-OS development tool available at www.st.com/stm32cubeide



STM32 Nucleo board portfolio



© STMicroelectronics - May 2020 - Printed in United Kingdom - All rights reserved
 ST and ST logo are registered and/or unregistered trademarks of STMicroelectronics International NV or its affiliates in the EU and/or elsewhere. In particular, ST and ST logo are Registered in the US Patent and Trademark Office.
 For additional information about ST trademarks, please refer to www.st.com/trademarks.
 All other product or service names are the property of their respective owners.

