

CM3822R800R-10

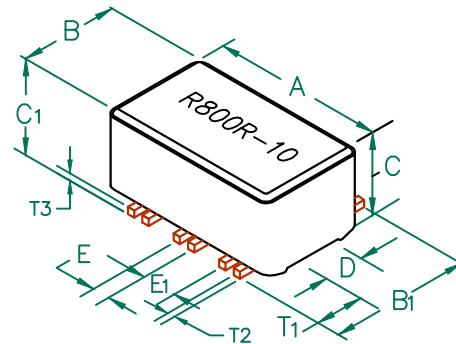


PHYSICAL DIMENSIONS:

A	9.78 [.385]	+ 0.15 [.006]
B	5.72 [.225]	+ 0.10 [.004]
B ₁	6.73 [.265]	MAX
C	4.32 [.170]	+ 0.08 [.003]
C ₁	5.00 [.197]	MAX.
D	2.41 [.095]	+ 0.08 [.003]
E	0.89 [.035]	+ 0.13 [.005]
E ₁	1.91 [.075]	+ 0.13 [.005]

WIRE:

T ₁	1.91 [.075]	+ 0.25 [.010]
T ₂	0.38 [.015]	TYP.
T ₃	0.38 [.015]	TYP.



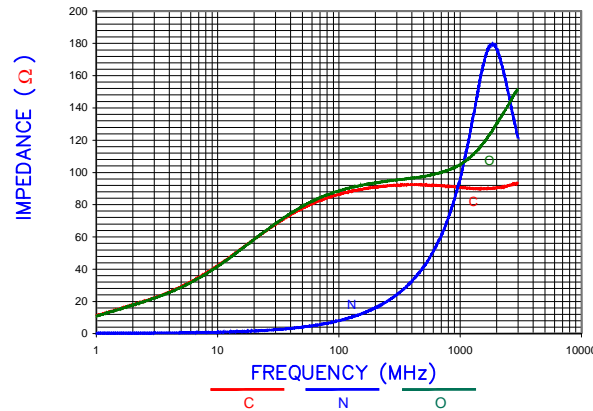
ELECTRICAL CHARACTERISTICS:

	Z @ 100MHz (Ω)	DCR (Ω)	Rated Current
Nominal	80		
Minimum	64		
Maximum	-	0.02	5,000 mA

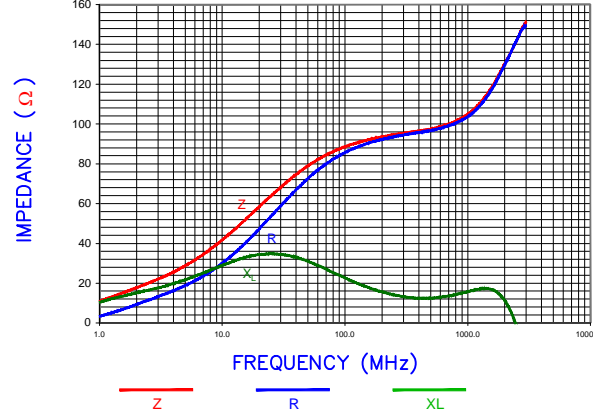
NOTES: UNLESS OTHERWISE SPECIFIED

1. TAPED AND REELED per CURRENT EIA SPECIFICATIONS, 13" REELS 1000 PCS PER REEL.
2. COMPONENTS SHOULD BE ADEQUATELY PREHEATED BEFORE SOLDERING.
3. REF. CARRIER TAPE SPECIFICATION #CART3822-0P.
4. TERMINATION FINISH IS 100% TIN.
5. THIS PART HAS NO PIN POLARITY.
6. OPERATION TEMPERATURE (INCLUDING SELF-HEATING): -40 ~ +125°C.

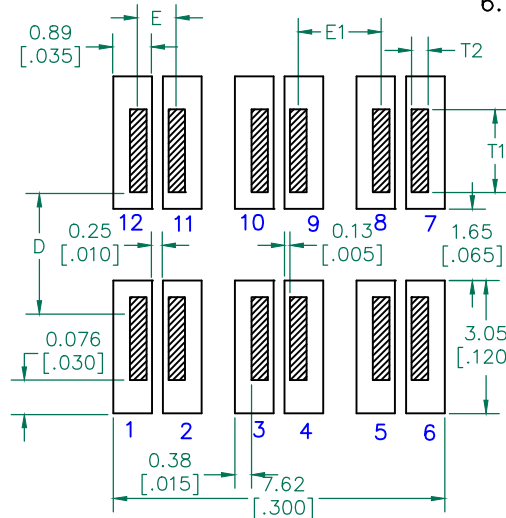
Z vs. FREQUENCY (C,O,N)



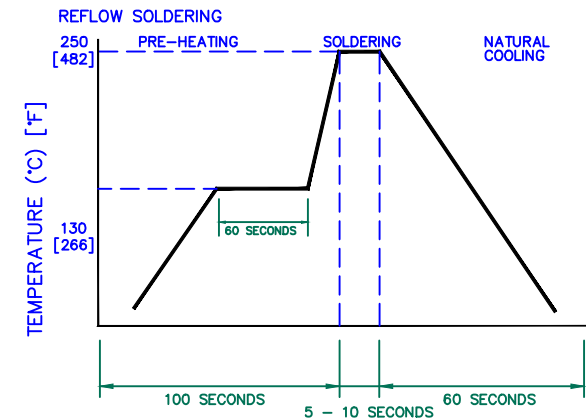
Z, R, XL vs. FREQUENCY



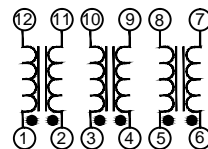
LAND PATTERNS FOR REFLOW SOLDERING



RECOMMENDED SOLDERING CONDITIONS

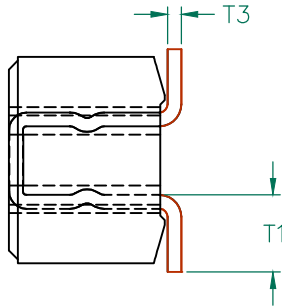
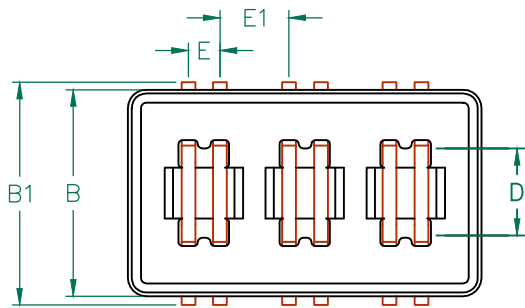


EQUIVALENT CIRCUIT NO POLARITY



DIMENSIONS ARE IN mm (INCHES).

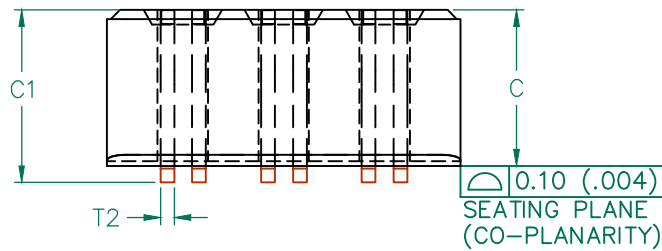
This print is the property of Laird Tech. and is loaned in confidence subject to return upon request and with the understanding that no copies shall be made without the written consent of Laird Tech. All rights to design or invention are reserved.			Laird		
PROJECT/PART NUMBER:		REV		PART TYPE:	DRAWN BY:
D ADD NOTE 6 08/30/12 QIU		CM3822R800R-10		D	JRK
C UPDATE COMPANY LOGO ADD EQUIV. CIRCUIT 02/03/09 JRK		DATE: 06/01/04		SCALE: NTS	SHEET: 1 of 2
B UPDATE COMPANY LOGO 12/06/07 JRK		CAD #		TOOL #	
A ORIGINAL DRAFT 06/01/04 JRK		CM3822R800R-10-D-1		H0385-0	
REV	DESCRIPTION	DATE	INT		



SCALE DRAWING 1:1

CM3822R800R-10

ELECTRICAL TESTING		
	GROSS	GROSS
TEST:	Z	Z
# TURNS	1	1
AWG	22	22
FREQUENCY	25 MHz	100 MHz
NOMINAL	60 Ω	80 Ω
MINIMUM	45 Ω	64 Ω
WEIGHT/1000	1.01 kgs.	2.22 lbs.



DIMENSIONS:

A	9.78 [.385]	+ 0.15 [.006]
B	5.72 [.225]	+ 0.10 [.004]
B ₁	6.73 [.265]	MAX
C	4.32 [.170]	+ 0.08 [.003]
C ₁	5.00 [.197]	MAX.
D	2.41 [.095]	+ 0.08 [.003]
E	0.89 [.035]	+ 0.13 [.005]
E ₁	1.91 [.075]	+ 0.13 [.005]

WIRE DIMENSIONS:

T ₁	1.91 [.075]	+ 0.25 [.010]
T ₂	0.38 [.015]	TYP.
T ₃	0.38 [.015]	TYP.

NOTES: UNLESS OTHERWISE SPECIFIED

1. WIRE: REFERENCE STEWARD WIRE PURCHASE SPEC. W0022-*1.
2. IMPEDANCE VALUES ARE GROSS, MEASURED USING W0022-*1 WIRE PLACED AGAINST END OF SLOT w/ NO D.C. BIAS.
3. REFERENCE STEWARD CORE 24H0385-000.
4. NO MORE THAN 0.18 [.007] DIFFERENCE FROM THE LONGEST TO THE SHORTEST CONDUCTOR ON ONE SIDE.
5. TERMINATION FINISH IS 100% TIN.
6. THIS PART HAS NO PIN POLARITY.

DIMENSIONS ARE IN mm (INCHES).				This print is the property of Laird Tech. and is loaned in confidence subject to return upon request and with the understanding that no copies shall be made without the written consent of Laird Tech. All rights to design or invention are reserved.			
D	ADD NOTE 6	08/30/12	QIU	PROJECT/PART NUMBER:	REV	PART TYPE:	DRAWN BY:
C	UPDATE COMPANY LOGO ADD EQUIV. CIRCUIT	02/03/09	JRK	CM3822R800R-10	D	ASSEMBLY	JRK
B	UPDATE COMPANY LOGO	12/06/07	JRK	DATE:	SCALE:	NTS	SHEET:
A	ORIGINAL DRAFT	06/01/04	JRK	06/01/04	H0385-0		2 of 2
REV	DESCRIPTION	DATE	INT	CM3822R800R-10-D-2			