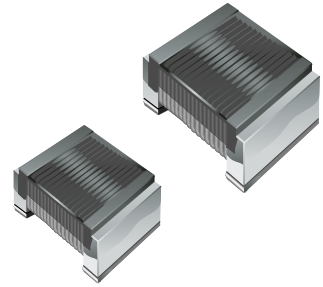




Product Change Notification

April, 2008

Bourns Manufacturers Representatives
Corporate Distributor Product Managers
Americas Sales Team
Asia Sales Team
Europe Sales Team
Bourns Internal
Bourns Plant Managers



Change to UV-Cured Epoxy from Heat-Cured Epoxy for Models CW201212 and CW252016

As of April 1, 2008, the epoxy used in Models [CW201212](#) and [CW252016](#) wirewound chip inductors will be changed to a UV-cured material. Details of the material may be found in the Material Declarations located on the Bourns website through the "[RoHS/EU China](#)" link.

Models CW201212 and CW252016 will still be RoHS-compliant. There is NO CHANGE in performance, dimensions, or packaging.

A list of affected part numbers is located on page 2 of this memo

IC0815

CW201212 and CW252016 part numbers:

CW201212 Series

CW201212-2N2J	CW201212-R39J
CW201212-2N7J	CW201212-R47J
CW201212-3N3J	CW201212-R56J
CW201212-3N9J	CW201212-R68J
CW201212-4N7J	CW201212-R82J
CW201212-5N6J	CW201212-R91J
CW201212-6N8J	CW201212-10NG
CW201212-8N2J	CW201212-12NG
CW201212-10NJ	CW201212-15NG
CW201212-12NJ	CW201212-18NG
CW201212-15NJ	CW201212-22NG
CW201212-18NJ	CW201212-27NG
CW201212-22NJ	CW201212-33NG
CW201212-27NJ	CW201212-39NG
CW201212-33NJ	CW201212-47NG
CW201212-39NJ	CW201212-56NG
CW201212-47NJ	CW201212-68NG
CW201212-56NJ	CW201212-82NG
CW201212-68NJ	CW201212-R10G
CW201212-82NJ	CW201212-R12G
CW201212-R10J	CW201212-R15G
CW201212-R12J	CW201212-R18G
CW201212-R15J	CW201212-R22G
CW201212-R18J	CW201212-R27G
CW201212-R22J	CW201212-R33G
CW201212-R27J	CW201212-R39G
CW201212-R33J	

CW252016 Series

CW252016-10NK	CW252016-2R7J
CW252016-12NK	CW252016-3R3J
CW252016-15NK	CW252016-3R9J
CW252016-18NK	CW252016-4R7J
CW252016-22NK	CW252016-10NJ
CW252016-27NK	CW252016-12NJ
CW252016-33NK	CW252016-15NJ
CW252016-39NK	CW252016-18NJ
CW252016-47NK	CW252016-22NJ
CW252016-56NJ	CW252016-27NJ
CW252016-68NJ	CW252016-33NJ
CW252016-82NJ	CW252016-39NJ
CW252016-R10J	CW252016-47NJ
CW252016-R12J	CW252016-56NG
CW252016-R15J	CW252016-68NG
CW252016-R18J	CW252016-82NG
CW252016-R22J	CW252016-R10G
CW252016-R27J	CW252016-R12G
CW252016-R33J	CW252016-R15G
CW252016-R39J	CW252016-R18G
CW252016-R47J	CW252016-R22G
CW252016-R56J	CW252016-R27G
CW252016-R68J	CW252016-R33G
CW252016-R82J	CW252016-R39G
CW252016-1R0J	CW252016-R47G
CW252016-1R2J	CW252016-R56G
CW252016-1R5J	CW252016-R68G
CW252016-1R8J	CW252016-R82G
CW252016-2R2J	CW252016-1R0G