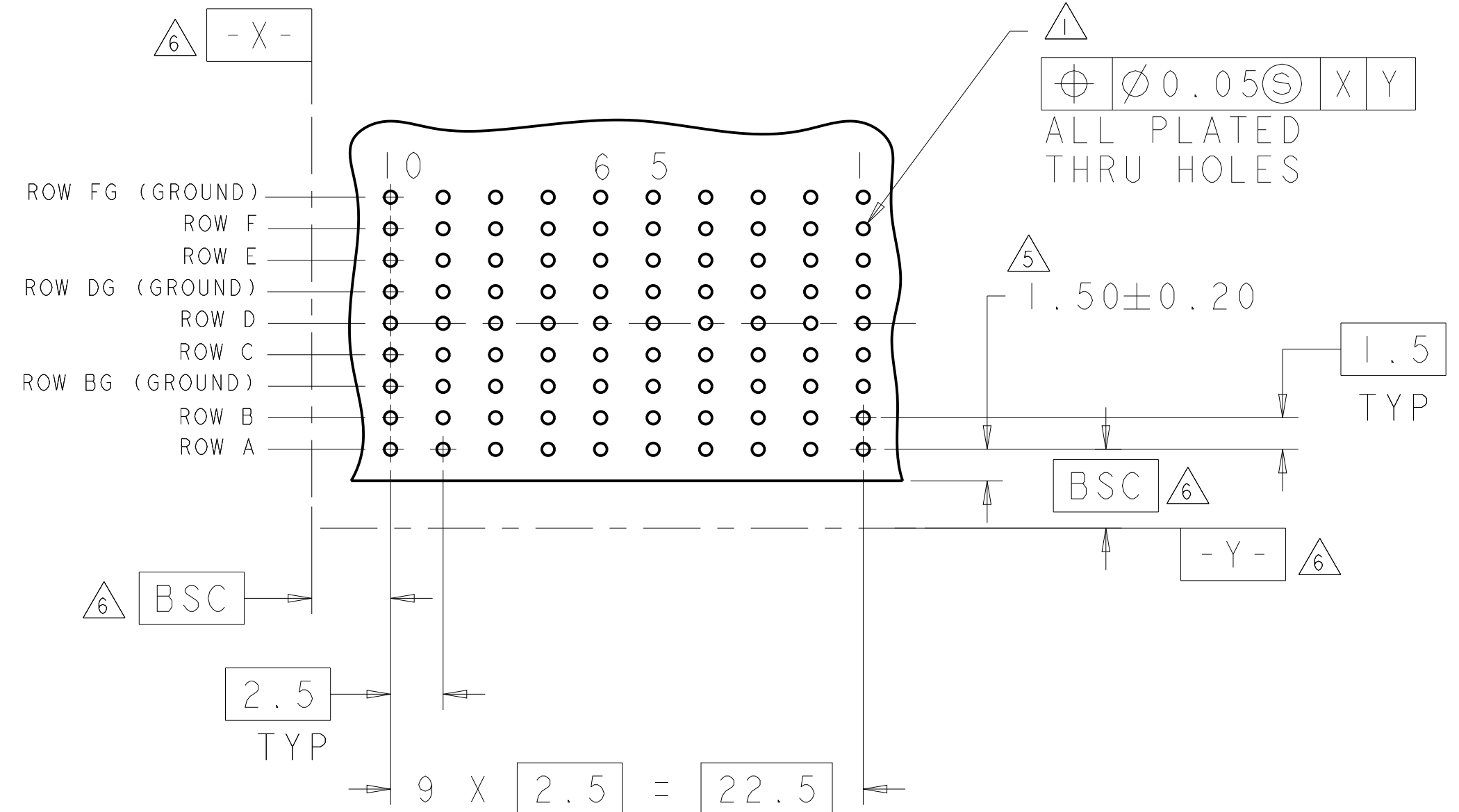
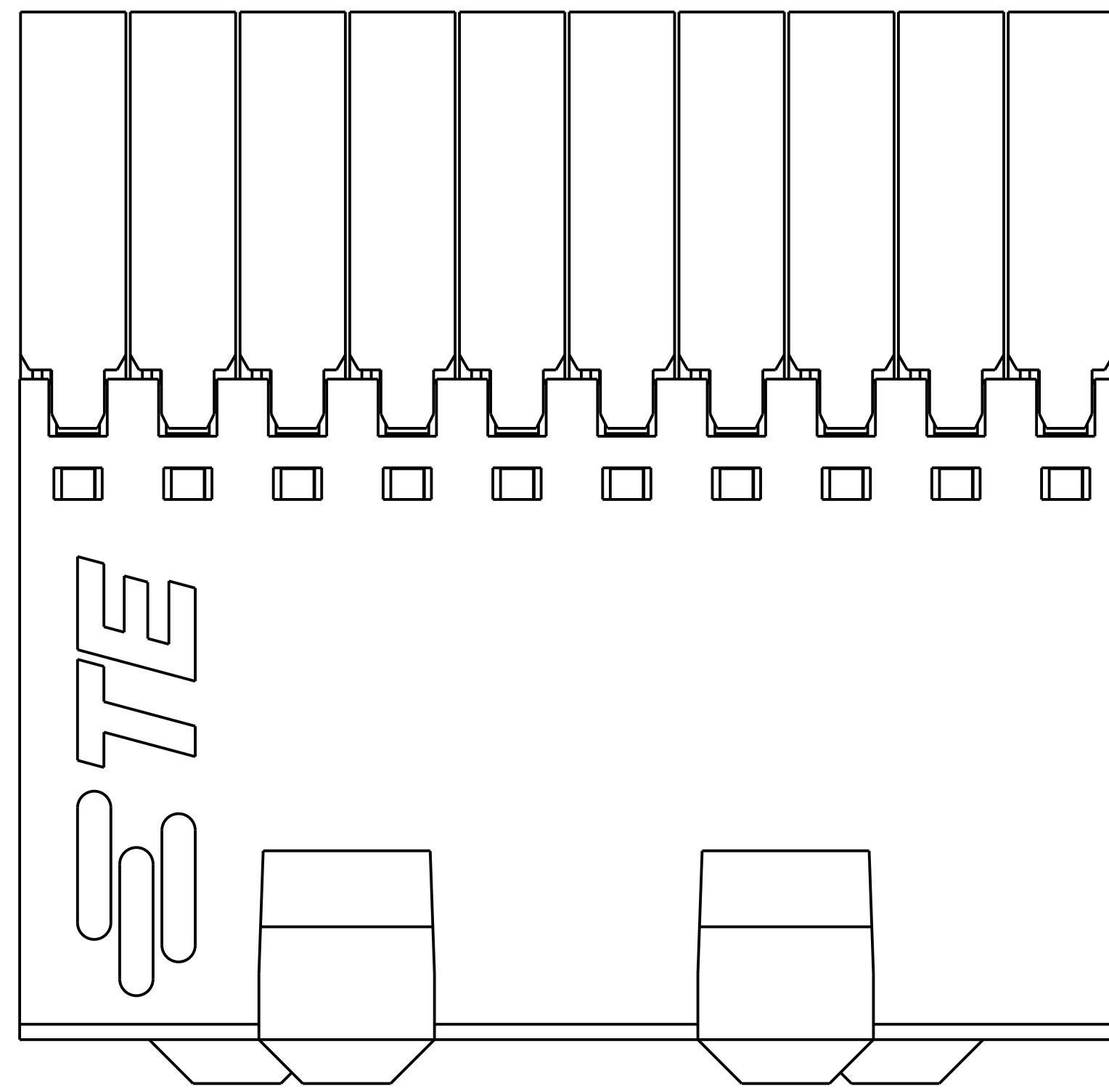
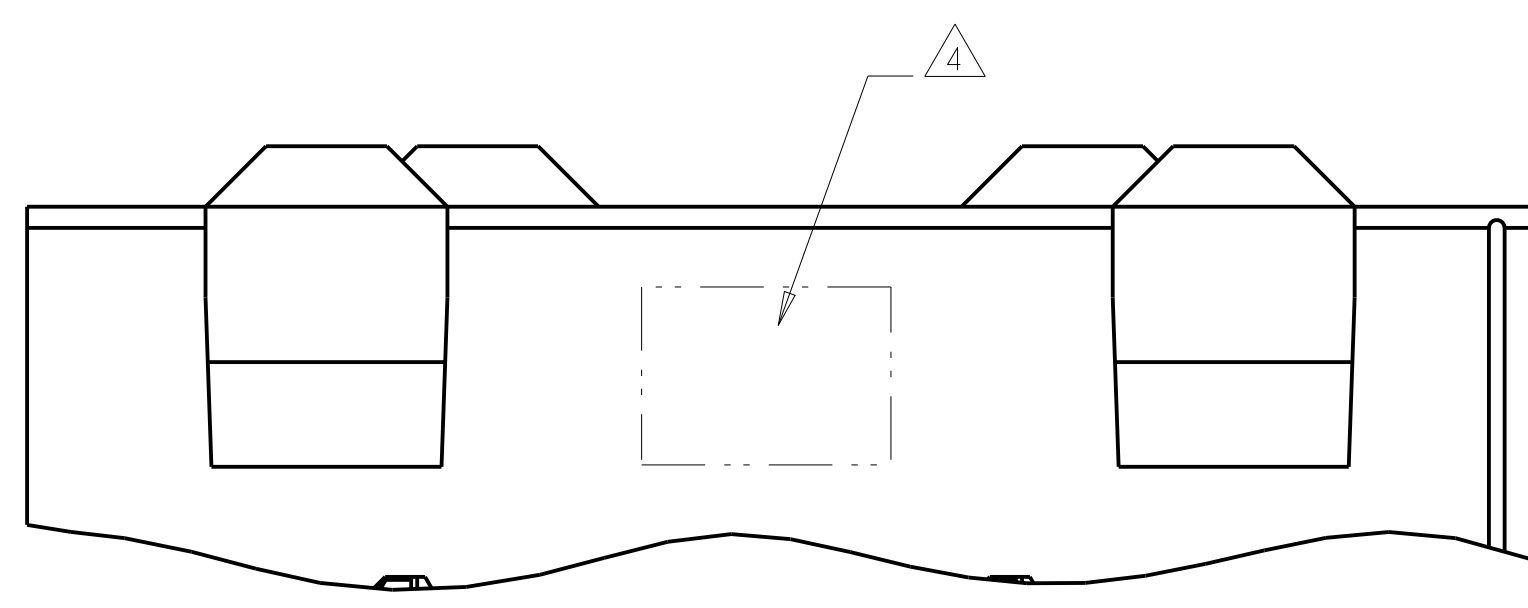
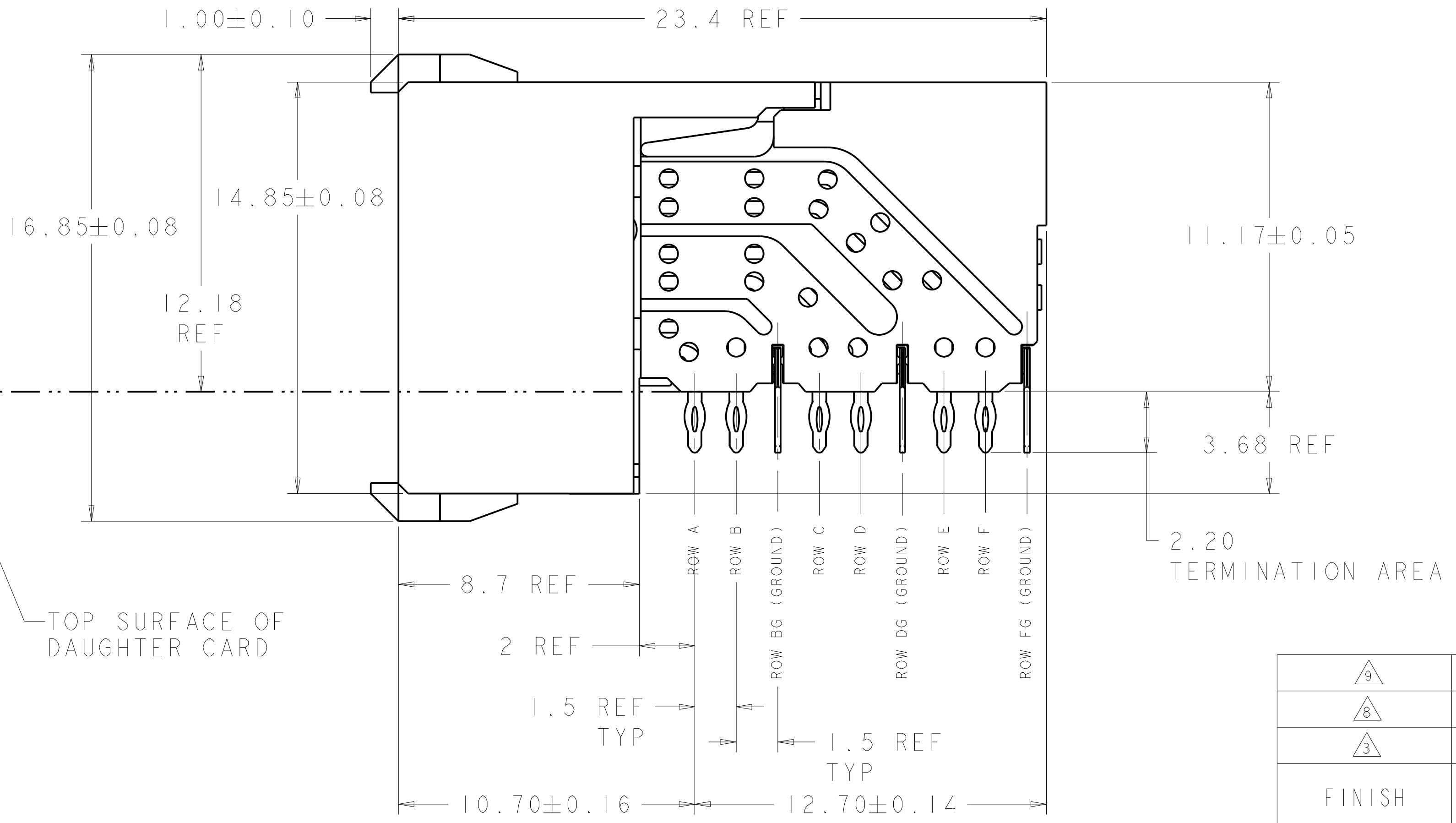
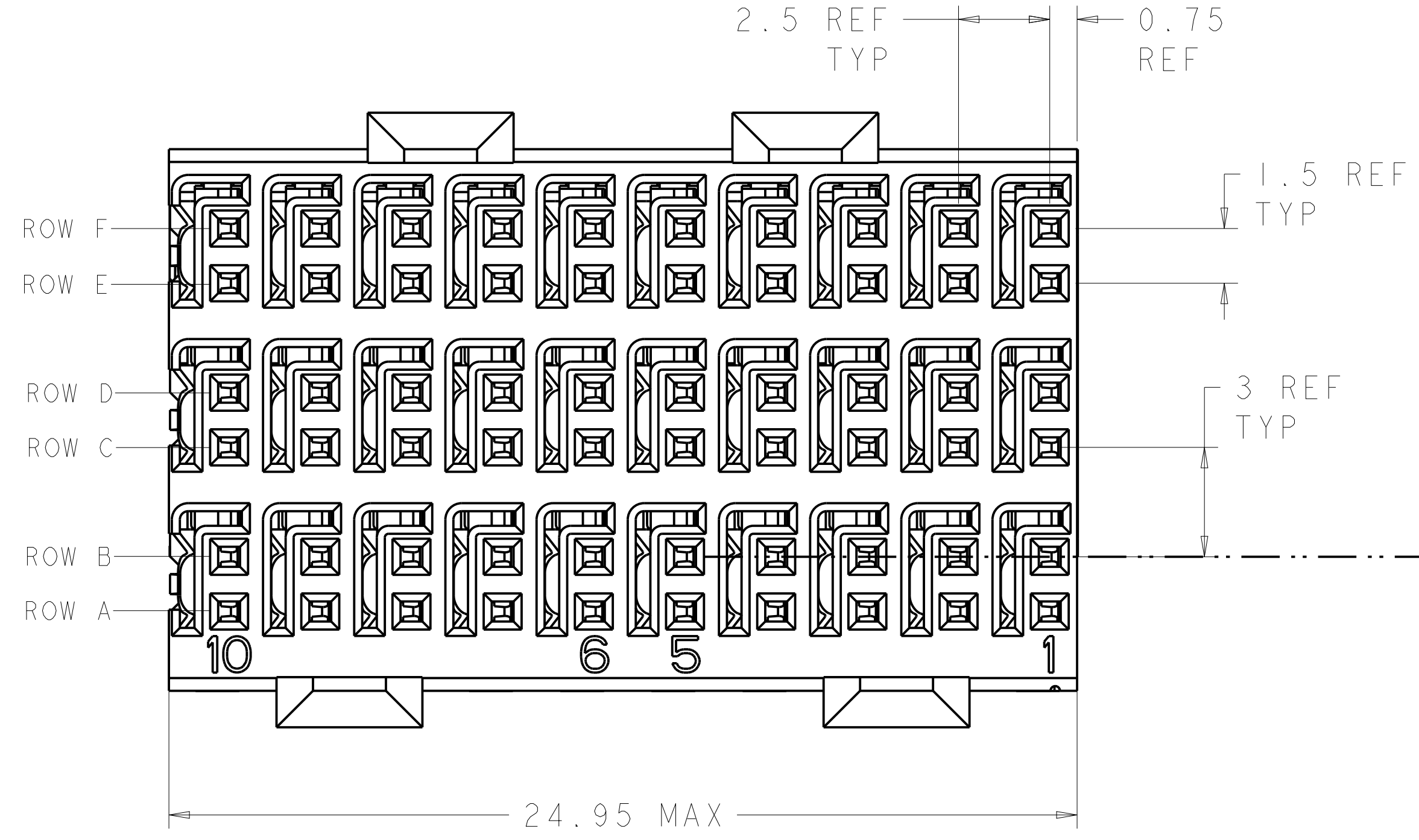


REVISIONS				
P.	LTM	DESCRIPTION	DATE	APPROV
J		REVISED PER ECN-21-105110	02JUN2021	RZ HL



RECOMMENDED PC BOARD LAYOUT,
 DAUGHTER BOARD,
 COMPONENT SIDE SHOWN
 SCALE 4:1

- △ REFERENCE APPLICATION SPEC 114-13059 FOR RECOMMENDED PLATED THRU HOLE DIAMETER AND PLATING THICKNESSES.
- △ MATERIAL:
 SHIELD - PHOSPHOR BRONZE
 CONTACT - COPPER-NICKEL-SILICON
 HOUSING, CHICKLET AND CHICKLET COVER - GLASS FILLED POLYESTER, UL 94V-0 RATED.
- △ FINISH: SIGNAL AND GROUND CONTACTS:
 MATING AREA: MEETS THE PERFORMANCE REQUIREMENTS OF PRODUCT SPECIFICATION 108-2055; BASED ON TELCORDIA GR-1217-CORE, APPLICATIONS IN UNCONTROLLED ENVIRONMENTS
 COMPLIANT PIN AREA: 0.5µm MIN BRIGHT TIN-LEAD OVER BASE PLATING
- △ CONNECTOR MARKED WITH PART NUMBER AND DATE CODE IN APPROXIMATE AREA SHOWN.
- △ DIMENSION APPLIES TO CENTERLINE OF THRU HOLE
- △ DATUMS AND BASIC DIMENSIONS ESTABLISHED BY CUSTOMER
- 7. CONTACT AREA LUBRICATED WITH BELLCORE APPROVED LUBRICANT. TECHNICAL REFERENCE: GR-1217-CORE, ISSUE 1, NOVEMBER 1995.
- △ FINISH: CONTACT AND SHIELD
 MATING AREA - 1.27µm MIN GOLD OVER 1.27µm MIN NICKEL
 COMPLIANT PIN AREA - 0.5µm MIN BRIGHT TIN-LEAD OVER 1.27µm MIN NICKEL
- △ FINISH: CONTACT AND SHIELD
 MATING AREA - 1.27µm MIN GOLD OVER 1.27µm MIN NICKEL
 COMPLIANT PIN AREA - 0.5µm MIN TIN/LEAD OVER 1.27µm MIN NICKEL
 NO LUBRICANT



△9	1469081-3
△8	1469081-2
△3	1469081-1
FINISH	PART NUMBER

THIS DRAWING IS A CONTROLLED DOCUMENT.		OWN S. MAGARO 13MAY2002	DATE	13MAY2002
DIMENSIONS:		CHK N. SCHROLL 13MAY2002	DATE	16MAY2007
mm	TOLERANCES UNLESS OTHERWISE SPECIFIED:	APVD P. PATTERSON	NAME	RECEPTACLE ASSEMBLY, 3 PAIR, 25mm, HMZd
0 PLC	±	PRODUCT SPEC		
1 PLC	±	108-2055		
2 PLC	±	APPLICATION SPEC		
3 PLC	±	114-13059		
4 PLC	±	WEIGHT		
ANGLES	±	CUSTOMER DRAWING		
MATERIAL	SEE TABLE	SIZE	CAGE CODE	DRAWING NO
FINISH		A100779	C=1469081	RESTRICTED TO
		SCALE	8:1	SHEET 1 OF 1