



COMPONENTS FOR A
CONNECTED
PLANET™

ENGINEERING CHANGE NOTICE

ECN NO:	RD2140065
PAGE:	1 of 9

INITIATION	PART NO: See page 4 & 5		DESCRIPTION: BOM			
	INITIATED BY: (Name) Xue Riping	DEPT.: ICM R&D	RESPONSIBLE ENGR: Sandy Lin	DEPT.: ICM R&D	DATE: Oct 14,14	
	<input type="checkbox"/> REQUESTED BY: (CUSTOMER)		<input checked="" type="checkbox"/> INTERNAL:		<input type="checkbox"/> SUBCONTRACTOR:	

REASONING	REASON FOR CHANGE: To save the labor and reduce the material cost in the tray packing process.
	DETAILS OF CHANGE: Update the labor to cancel the transparent tape in the tray packing process for the BOM of 1XN products (see page 2 - 5 for detail).
Engineering notes: After the evaluation, it doesn't affect the product's packing performance after we cancel the transparent tape in the tray packing for the relevant products. The trays can protect the products properly even without adding the transparent tape. This change will effective on all 1XN products series. After discuss with relevant departments, we will start to remove the transparent tape in the tray packing process from WK1444. Please refer the meeting record MRD144101 for the detail arrangement.	

PRODUCT MANAGEMENT	PRODUCT MANAGEMENT APPROVAL (To be answered by ECN initiator)	
	<input checked="" type="checkbox"/> YES - PRODUCT MANAGEMENT / MARKETING APPROVAL REQUIRED	
	a) To be filled by the product manager / representative <input checked="" type="checkbox"/> ACCEPTED BY PM - CONTINUE TO 'b' <input type="checkbox"/> REJECTED BY PM - ECN STOPPED: REASON FOR ECN REJECTION -	
b) i.) PCN is required <input checked="" type="checkbox"/> Yes PCN#: PC2140065 <input type="checkbox"/> No ii.) PCN request customer approval <input type="checkbox"/> Yes <input checked="" type="checkbox"/> No Implement ECN Lead time :		SIGNATURE:
<input type="checkbox"/> NO - CONTINUE TO NEXT SECTION		

ACTION	RELEVANT DOCUMENT AFFECTED		
	DOCUMENT TYPE	DOCUMENT NUMBER	REV
BOM		see page 4 & 5	N/A
PROCESS SPECIFICATION			
PRODUCT SPECIFICATION			
SUB-ASSEMBLY DRAWING			
RAW MATERIAL DRAWING			
TESTING SPECIFICATION			
OTHERS :			

DISPOSITION	MATERIAL IMPACT :							
	DISPOSITION / EFFECTIVITY	DATE CODE / LOT NO	IMMEDIATE CHANGE	RUNNING CHANGE	UAI	REWORK	SCRAP	REMARK
	NEW ORDER	WK1444		X	X			
	ON ORDER	WK1444		X	X			
	RM STOCK	WK1444		X	X			
	WIP	WK1444		X	X			
	FG	WK1444		X	X			
	OTHERS:							

LABOR IMPACT :
OTHER IMPACT :

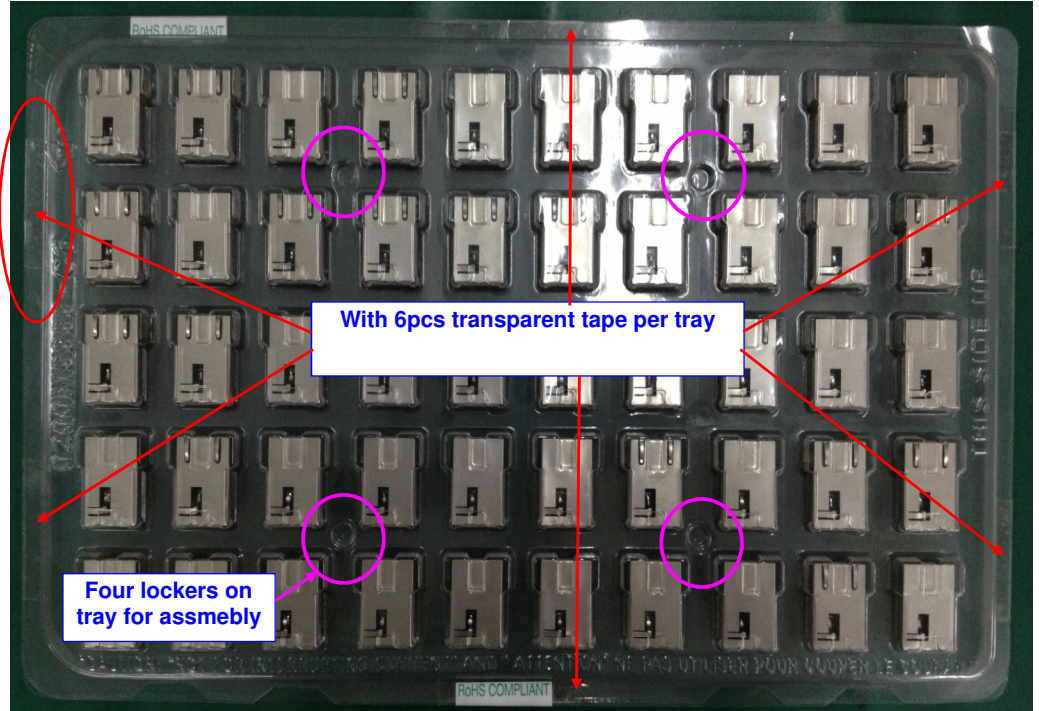
APPROVAL & DISTRIBUTION	DEPARTMENT	APPROVAL / DATE	DIST.	DEPARTMENT	APPROVAL / DATE	DIST.
	ACCOUNTING ()				PRODUCTION ()	
CS (HK)	X		X	PURCHASING (Module)	X	X
CUSTOMS ()				QA (WM-ICM)	X	X
DATA PROC (HK)	X		X	R&D/ENGG (WM-ICM)	X	X
DESIGN ENGG ()				SAFETY ENGG ()		
MANU.ENGG (PG)				SALES () HK	X	X
	Danny Kwan	X	X	JCY	X	X
SMT ()				STORE (FG) ()		
IQC ()				STORE (RM) ()		
PMC (HK)	X		X	TEST Eng. ()		
PM (USA) Jeff Kring	X		X	OTHERS ()		
	John Hess	X	X			

(*)-LOCATION AND /OR PRODUCT LINE (eg. PG,GR,HK,HZ,JCY,MC,NCal,WBo,SD,UK,ZS *Put X on appropriate box

ENGINEERING CHANGE NOTICE

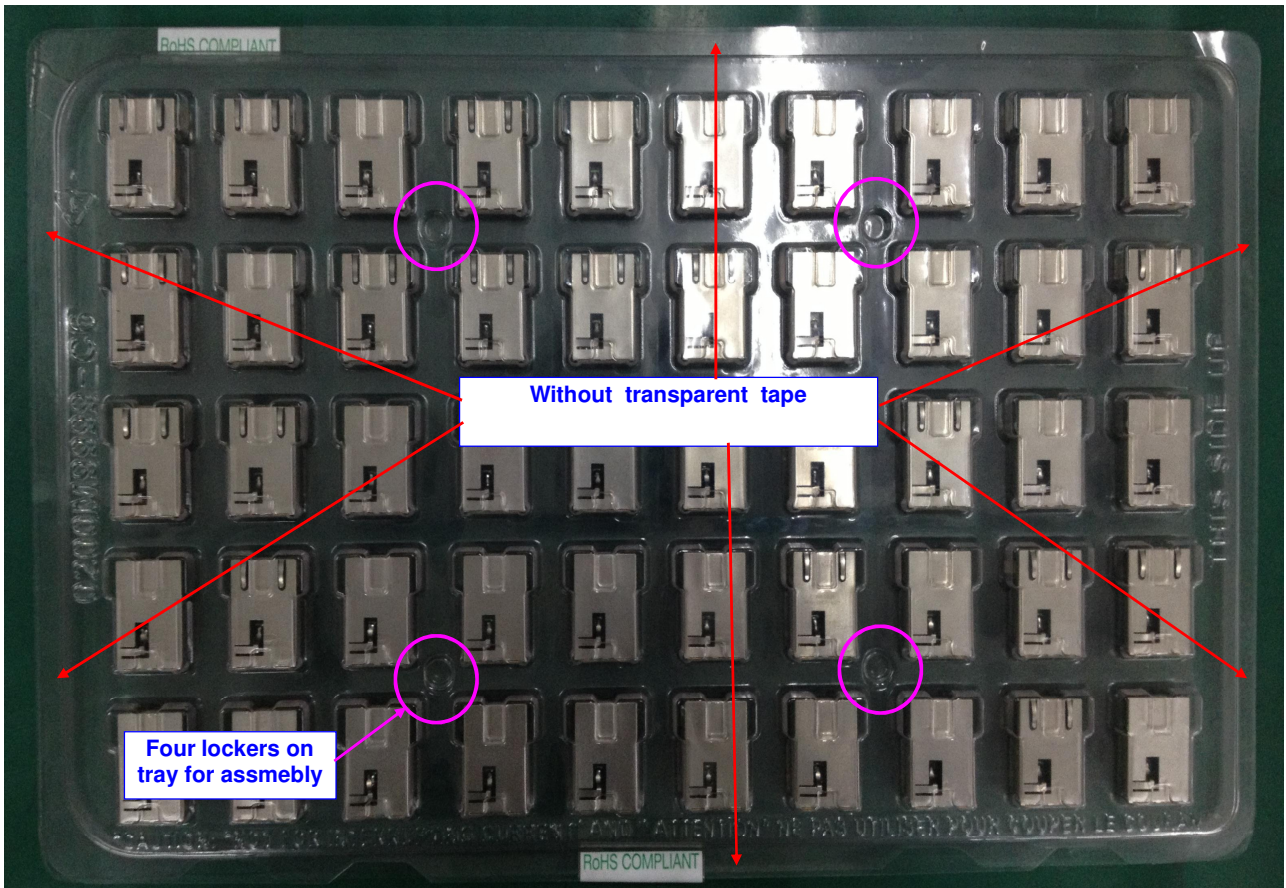
Detail change to remove the transparent tape in the tray packing process:

1). Take the detail change of 0899-1X1 tray packing for example:



WAS

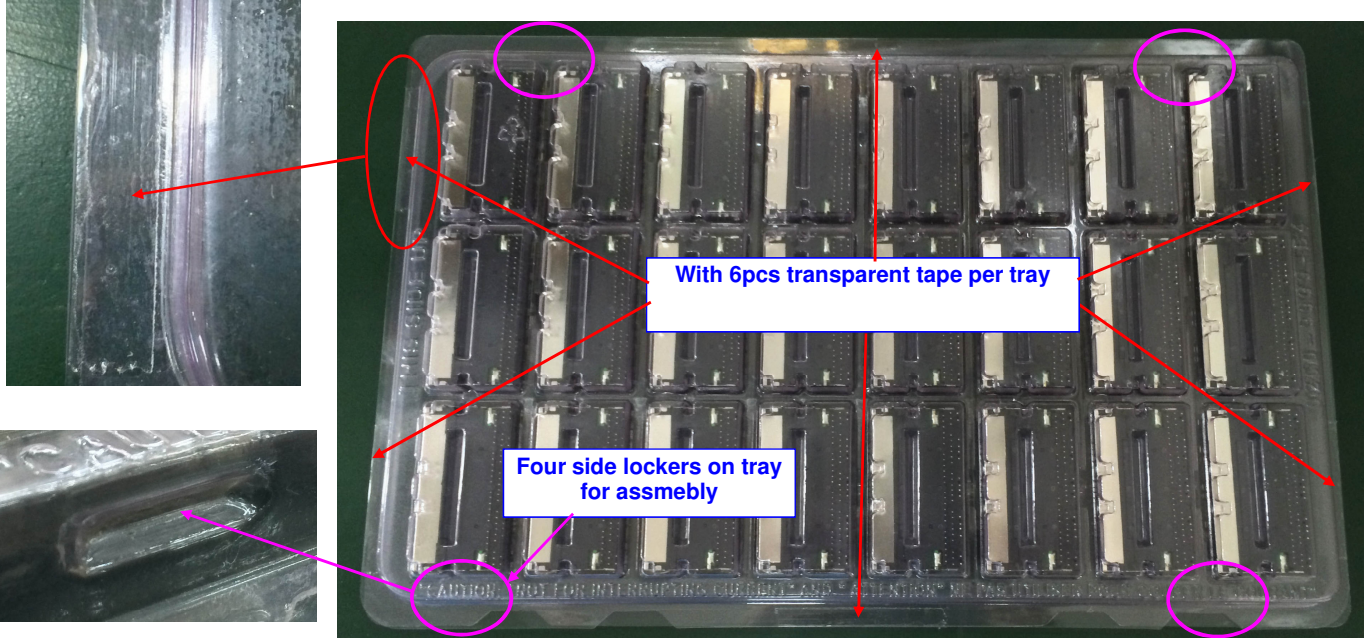
IS



ENGINEERING CHANGE NOTICE

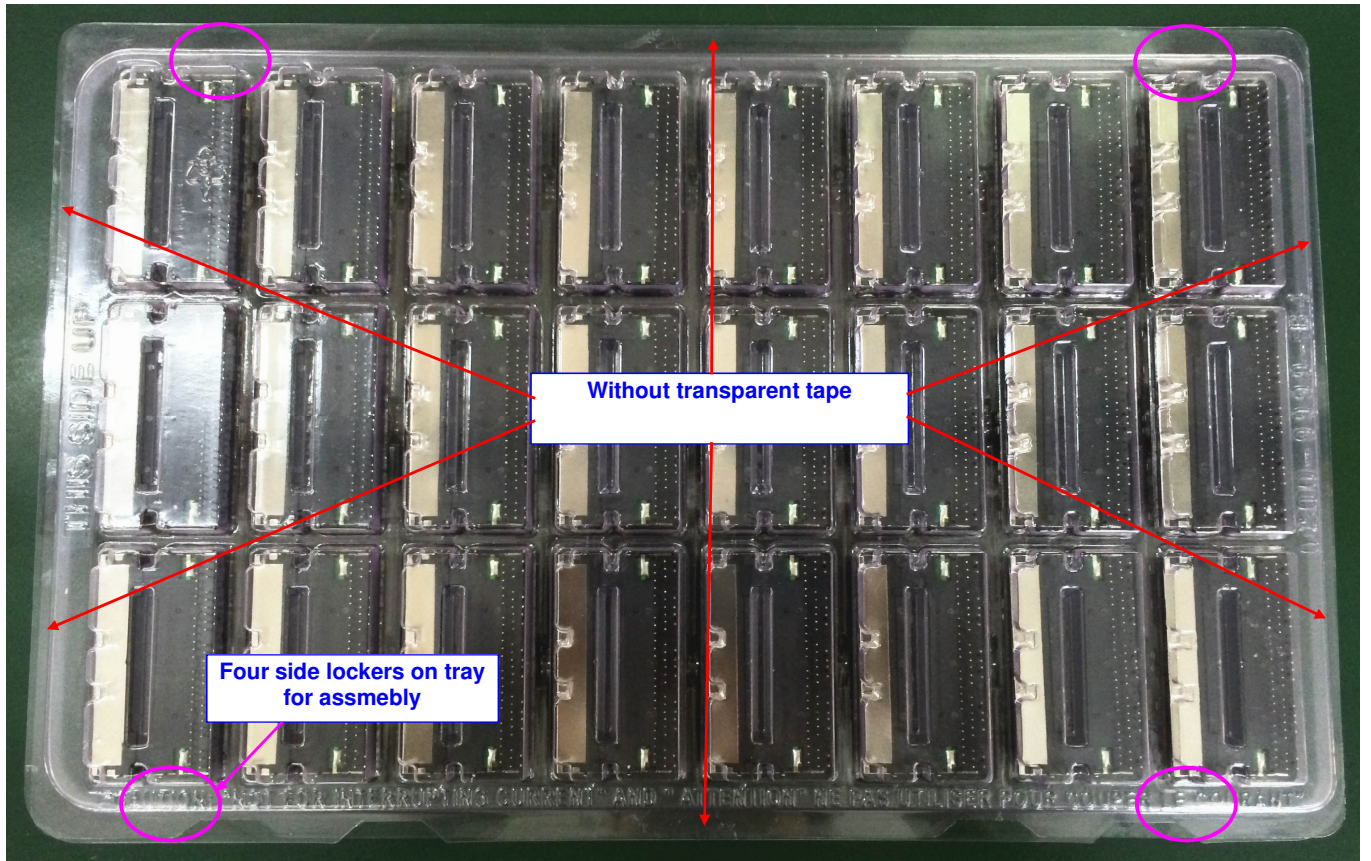
(continue from previous page)

2). Take the detail change of 0826-1X4 tray packing for example:



WAS

IS





ENGINEERING CHANGE NOTICE

P/N	form		to		P/N	form		to	
	P/N	usage	P/N	usage		P/N	usage	P/N	usage
08101A1TN6-F	9999-9999-80	0.0500	9999-9999-80	0.0499	08101A4TN6-F	9999-9999-80	0.1212	9999-9999-80	0.1211
08111X1T06-F	9999-9999-80	0.0432	9999-9999-80	0.0431	08111X1T36-F	9999-9999-80	0.0432	9999-9999-80	0.0431
08131X1T29-F	9999-9999-80	0.0515	9999-9999-80	0.0514	08131X1T43-F	9999-9999-80	0.0515	9999-9999-80	0.0514
08131X1T57-F	9999-9999-80	0.0546	9999-9999-80	0.0545	08131X1TGH-F	9999-9999-80	0.0515	9999-9999-80	0.0514
08131X4A57BF	9999-9999-80	0.1182	9999-9999-80	0.1181	08131X4A57CF	9999-9999-80	0.1182	9999-9999-80	0.1181
08131X4T32CF	9999-9999-80	0.1288	9999-9999-80	0.1287	08131X4T43-F	9999-9999-80	0.0515	9999-9999-80	0.0514
08131X4T57-F	9999-9999-80	0.1288	9999-9999-80	0.1287	08131X4T58-F	9999-9999-80	0.1402	9999-9999-80	0.1401
08131X4TCJDF	9999-9999-80	0.1203	9999-9999-80	0.1202	08161X1T23-F	9999-9999-80	0.0500	9999-9999-80	0.0499
08161X1T43-F	9999-9999-80	0.0500	9999-9999-80	0.0499	08171A1T11-F	9999-9999-80	0.0364	9999-9999-80	0.0363
08171D1T21-F	9999-9999-80	0.0364	9999-9999-80	0.0363	08201X1T00-F	9999-9999-80	0.0591	9999-9999-80	0.0590
08211G1JCLAF	9999-9999-80	0.0682	9999-9999-80	0.0681	08211X1T36-F	9999-9999-80	0.0682	9999-9999-80	0.0681
08211X1T43-F	9999-9999-80	0.0682	9999-9999-80	0.0681	08261A1T23-F	9999-9999-80	0.0568	9999-9999-80	0.0567
08261B1T23-F	9999-9999-80	0.0568	9999-9999-80	0.0567	08261C1T23-F	9999-9999-80	0.0568	9999-9999-80	0.0567
08261C4L32MF	9999-9999-80	0.0697	9999-9999-80	0.0696	08261C4T23-F	9999-9999-80	0.0697	9999-9999-80	0.0696
08261D1T23-F	9999-9999-80	0.0568	9999-9999-80	0.0567	08261D4AG3AF	9999-9999-80	0.0697	9999-9999-80	0.0696
08261D4AG3BF	9999-9999-80	0.0697	9999-9999-80	0.0696	08261DX1BS-F	9999-9999-80	0.0568	9999-9999-80	0.0567
08261DX4BS-F	9999-9999-80	0.0697	9999-9999-80	0.0696	08261E1T23-F	9999-9999-80	0.0568	9999-9999-80	0.0567
08261G1T23-F	9999-9999-80	0.0568	9999-9999-80	0.0567	08261G1T29-F	9999-9999-80	0.0568	9999-9999-80	0.0567
08261G1T43-F	9999-9999-80	0.0568	9999-9999-80	0.0567	08261G1TS8-F	9999-9999-80	0.0568	9999-9999-80	0.0567
08261G4L43MF	9999-9999-80	0.0697	9999-9999-80	0.0696	08261G4LCJ-F	9999-9999-80	0.0697	9999-9999-80	0.0696
08261G4T32-F	9999-9999-80	0.0697	9999-9999-80	0.0696	08261K1T23-F	9999-9999-80	0.0568	9999-9999-80	0.0567
08261K1T32-F	9999-9999-80	0.0568	9999-9999-80	0.0567	08261K1T43-F	9999-9999-80	0.0568	9999-9999-80	0.0567
08261K4A32-F	9999-9999-80	0.0697	9999-9999-80	0.0696	08261K4T32-F	9999-9999-80	0.0697	9999-9999-80	0.0696
08261L1T23-F	9999-9999-80	0.0568	9999-9999-80	0.0567	08261L1T57-F	9999-9999-80	0.0568	9999-9999-80	0.0567
08261M1T43-F	9999-9999-80	0.0568	9999-9999-80	0.0567	08261X1T23-F	9999-9999-80	0.0568	9999-9999-80	0.0567
08261X1T32-F	9999-9999-80	0.0568	9999-9999-80	0.0567	08261X1T43-F	9999-9999-80	0.0568	9999-9999-80	0.0567
08261X1T80-F	9999-9999-80	0.0591	9999-9999-80	0.0590	08261X1TAC-F	9999-9999-80	0.0591	9999-9999-80	0.0590
08261X1TM1-F	9999-9999-80	0.0568	9999-9999-80	0.0567	08261X2T23-F	9999-9999-80	0.0614	9999-9999-80	0.0613
08261X4T23-F	9999-9999-80	0.0697	9999-9999-80	0.0696	08261X4T43-F	9999-9999-80	0.0697	9999-9999-80	0.0696
08261XX146-F	9999-9999-80	0.0501	9999-9999-80	0.0500	08261XX1GJ-F	9999-9999-80	0.0637	9999-9999-80	0.0636
0838-1X1T-W6	9999-9999-80	0.0188	9999-9999-80	0.0187	0838-1X1T-W7	9999-9999-80	0.0188	9999-9999-80	0.0187
08621J1T43-F	9999-9999-80	0.0818	9999-9999-80	0.0817	0867-1G1T43J	9999-9999-80	0.0818	9999-9999-80	0.0817
0875-1C2TE3A	9999-9999-80	0.0455	9999-9999-80	0.0454	0875-1G2T-E3	9999-9999-80	0.0455	9999-9999-80	0.0454



ENGINEERING CHANGE NOTICE

P/N	form		to		P/N	form		to	
	P/N	usag	P/N	usag		P/N	usag	P/N	usag
0875-1G8TS2B	9999-9999-80	0.0887	9999-9999-80	0.0886	0875-1GX2EMA	9999-9999-80	0.0455	9999-9999-80	0.0454
0875-1SX8BJA	9999-9999-80	0.0887	9999-9999-80	0.0886	0899-1Z1R-Y6	9999-9999-80	0.0460	9999-9999-80	0.0459
08991G1RY6CC	9999-9999-80	0.0460	9999-9999-80	0.0459	08AR-1G2T-EM	9999-9999-80	0.0557	9999-9999-80	0.0556
08AR-1S2AEMB	9999-9999-80	0.0557	9999-9999-80	0.0556	08AR-1S6AEMB	9999-9999-80	0.0705	9999-9999-80	0.0704
08B01B1T06-F	9999-9999-80	0.0500	9999-9999-80	0.0499	08B01D1T36-F	9999-9999-80	0.0500	9999-9999-80	0.0499
08B01G1T06-F	9999-9999-80	0.0500	9999-9999-80	0.0499	08B01X1T03-F	9999-9999-80	0.0500	9999-9999-80	0.0499
08B01X1T06-F	9999-9999-80	0.0500	9999-9999-80	0.0499	08B01X1T36-F	9999-9999-80	0.0500	9999-9999-80	0.0499
08B01XX103-F	9999-9999-80	0.0500	9999-9999-80	0.0499	08B01XX106-F	9999-9999-80	0.0500	9999-9999-80	0.0499
08B01XX136-F	9999-9999-80	0.0500	9999-9999-80	0.0499	08B11X1T06-F	9999-9999-80	0.0432	9999-9999-80	0.0431
08B11X1T36-F	9999-9999-80	0.0432	9999-9999-80	0.0431	08C2-1A1T-36	9999-9999-80	0.0705	9999-9999-80	0.0704
08C2-1X1T-03	9999-9999-80	0.0705	9999-9999-80	0.0704	08C2-1X1T-36	9999-9999-80	0.0705	9999-9999-80	0.0704
08E5-121T-DD	9999-9999-80	0.0027	9999-9999-80	0.0026	L8111X1T03-F	9999-9999-80	0.0409	9999-9999-80	0.0408
L816-1X1T-06	9999-9999-80	0.0167	9999-9999-80	0.0166	L8261X1T23-F	9999-9999-80	0.0364	9999-9999-80	0.0363
L8261X1T43-F	9999-9999-80	0.0364	9999-9999-80	0.0363	L8261X4T23-F	9999-9999-80	0.0697	9999-9999-80	0.0696
L8261X4T43-F	9999-9999-80	0.0697	9999-9999-80	0.0696	L829-1GX1-91	9999-9999-80	0.0027	9999-9999-80	0.0026
L829-1J1T-43	9999-9999-80	0.0027	9999-9999-80	0.0026	L829-1J1T43D	9999-9999-80	0.0027	9999-9999-80	0.0026
L829-1X1T-91	9999-9999-80	0.0027	9999-9999-80	0.0026	L830-1A1T-43	9999-9999-80	0.0027	9999-9999-80	0.0026
L830-1J1D-43	9999-9999-80	0.0027	9999-9999-80	0.0026	L834-1C1T-32	9999-9999-80	0.0568	9999-9999-80	0.0567
L834-1G1T-S7	9999-9999-80	0.0568	9999-9999-80	0.0567	L834-1X1T-43	9999-9999-80	0.0568	9999-9999-80	0.0567
L836-1S1TDDJ	9999-9999-80	0.0027	9999-9999-80	0.0026	L869-1T1T43L	9999-9999-80	0.0027	9999-9999-80	0.0026
L886-1E2N-BF	9999-9999-80	0.0614	9999-9999-80	0.0613	L886-1G1T-CN	9999-9999-80	0.0341	9999-9999-80	0.0340
L886-1G1T-DH	9999-9999-80	0.0341	9999-9999-80	0.0340	L8AD-1E1T-CN	9999-9999-80	0.0339	9999-9999-80	0.0338
L8AD-1G1T-BF	9999-9999-80	0.0341	9999-9999-80	0.0340	L8AD-1G1TBFA	9999-9999-80	0.0341	9999-9999-80	0.0340
L8AL-1X1T32A	9999-9999-80	0.0027	9999-9999-80	0.0026	L8AT-1E1T43P	9999-9999-80	0.0027	9999-9999-80	0.0026
L8AW-1K1T-DD	9999-9999-80	0.0614	9999-9999-80	0.0613	L8E3-1G1T-43	9999-9999-80	0.0027	9999-9999-80	0.0026
V8111X4T06-F	9999-9999-80	0.1125	9999-9999-80	0.1124	V890-1AX1-A1	9999-9999-80	0.0667	9999-9999-80	0.0666
V8AV-1002ECA	9999-9999-80	0.0333	9999-9999-80	0.0332	C893-1XX1-62	9999-9999-80	0.0355	9999-9999-80	0.0354
C893-1RX1-E3	9999-9999-80	0.0355	9999-9999-80	0.0354	SI-61006-C	9999-9999-80	0.0461	9999-9999-80	0.0460
SI-61006-F	9999-9999-80	0.0461	9999-9999-80	0.0460	SI-61008-F	9999-9999-80	0.0506	9999-9999-80	0.0505



PRODUCT CHANGE NOTIFICATION

Date Issued: September 3, 2014

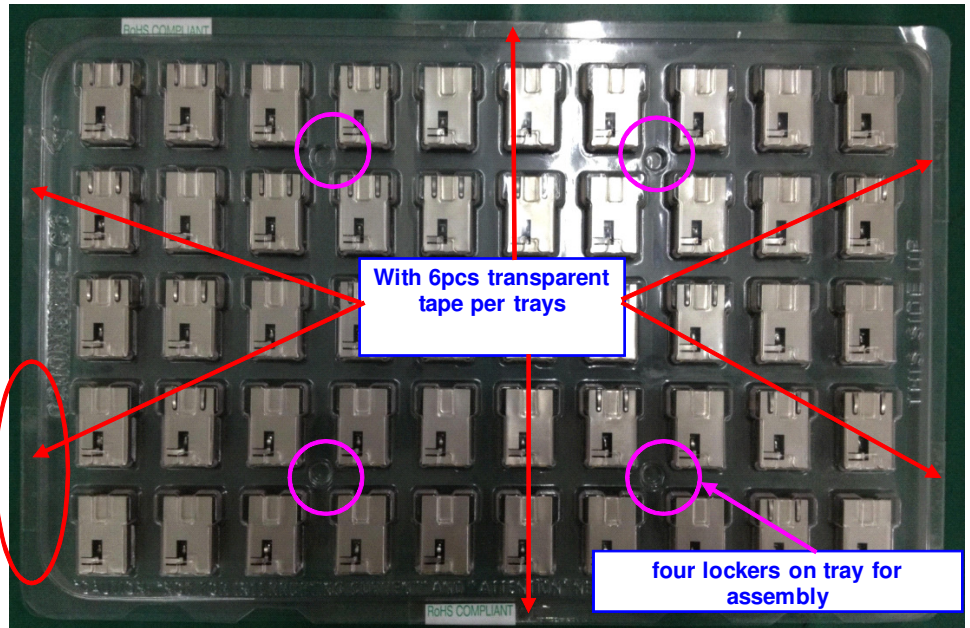
Product Identification: All Bel 1xN ICMs(except 10G products).

PCN Number: PC2140065

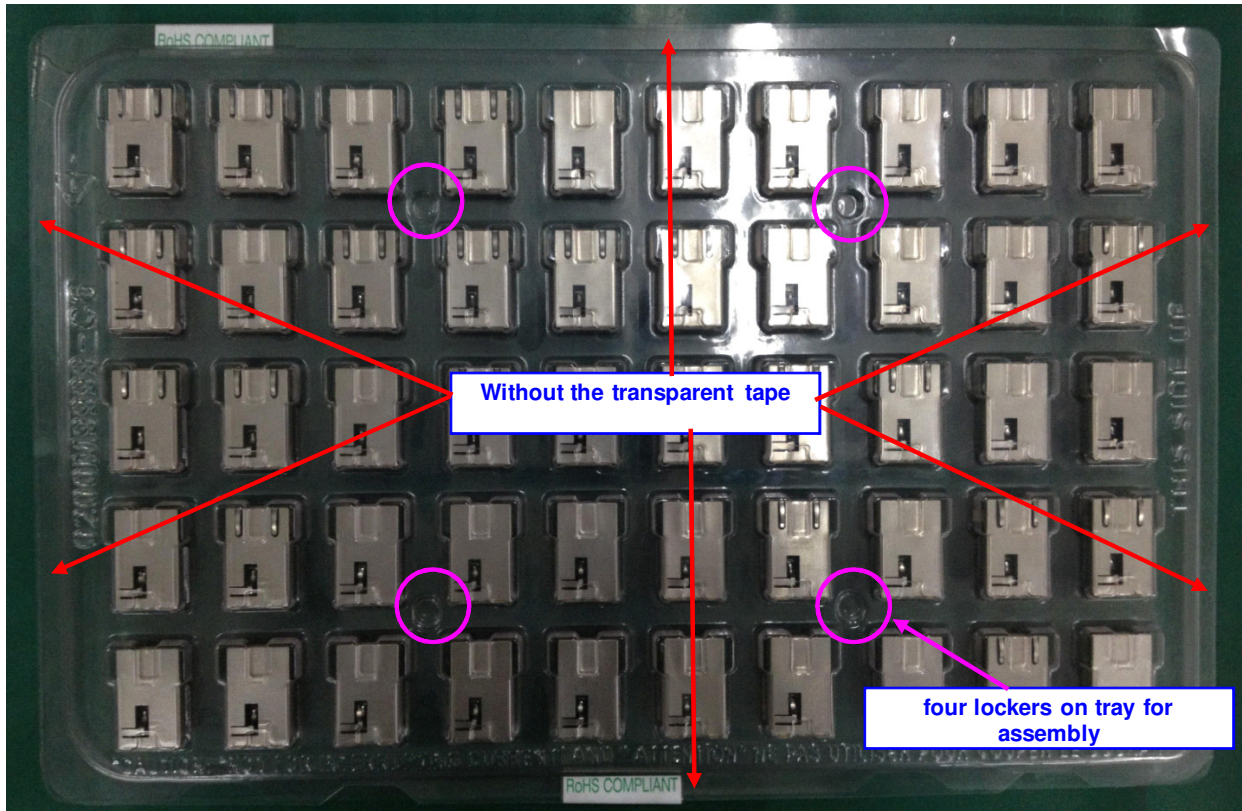
Reason for Change (s): In an effort to continually improve our product, Bel is pleased to announce an update to the packaging our 1xN ICMs. Initially Bel used small pieces of transparent tape on our packaging trays to hold the product in place. The tape is needed for heavier parts, but for 1xN parts that are lighter, the internal snap features of the plastics trays is strong enough to keep the parts in place and prevent any damage due to shipping/handling movements. These changes will not affect “form, fit, or function”, nor do they affect any other dimensions or electrical parameters of the part. No other changes to the above series are being implemented at this time.

Description of the Change (s): Bel is updating the packaging of our 1xN ICMs as shown below. We are removing the small pieces of transparent tape from the internal trays within a box. The plastic tray locking features are sufficient to hold the product in place and prevent damage.

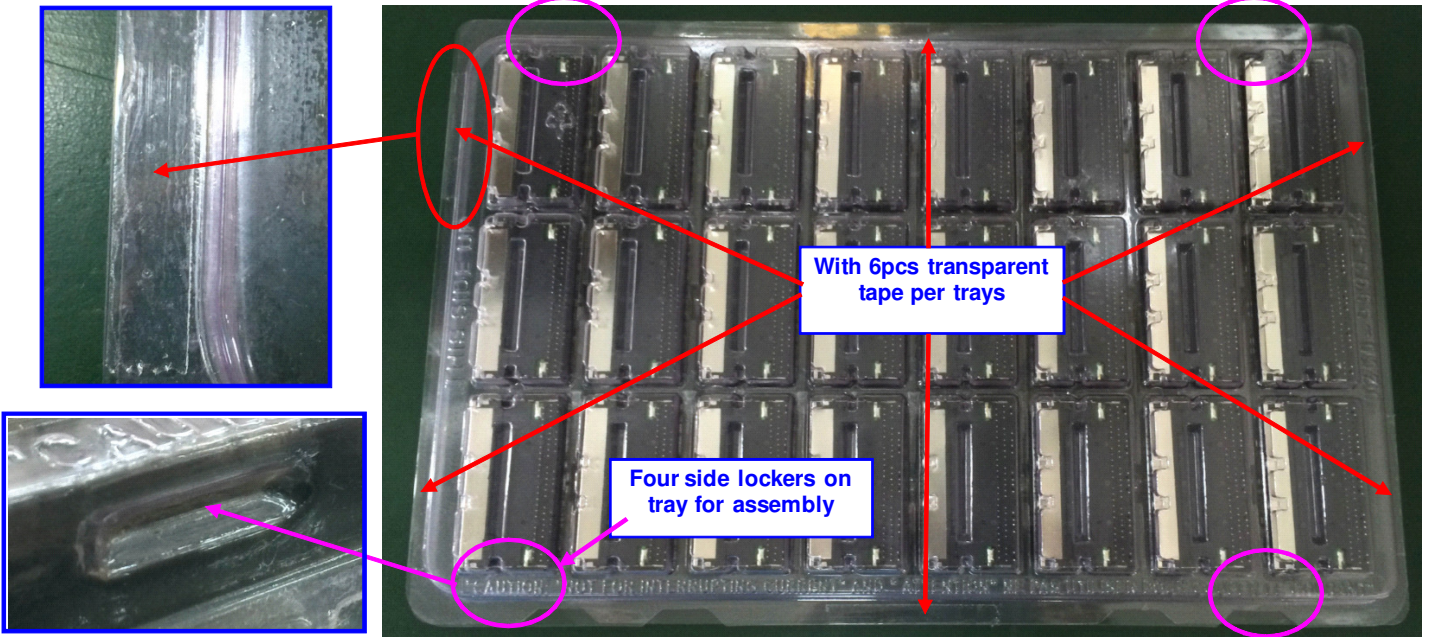
Existing process: add the transparent tape in the tray packing



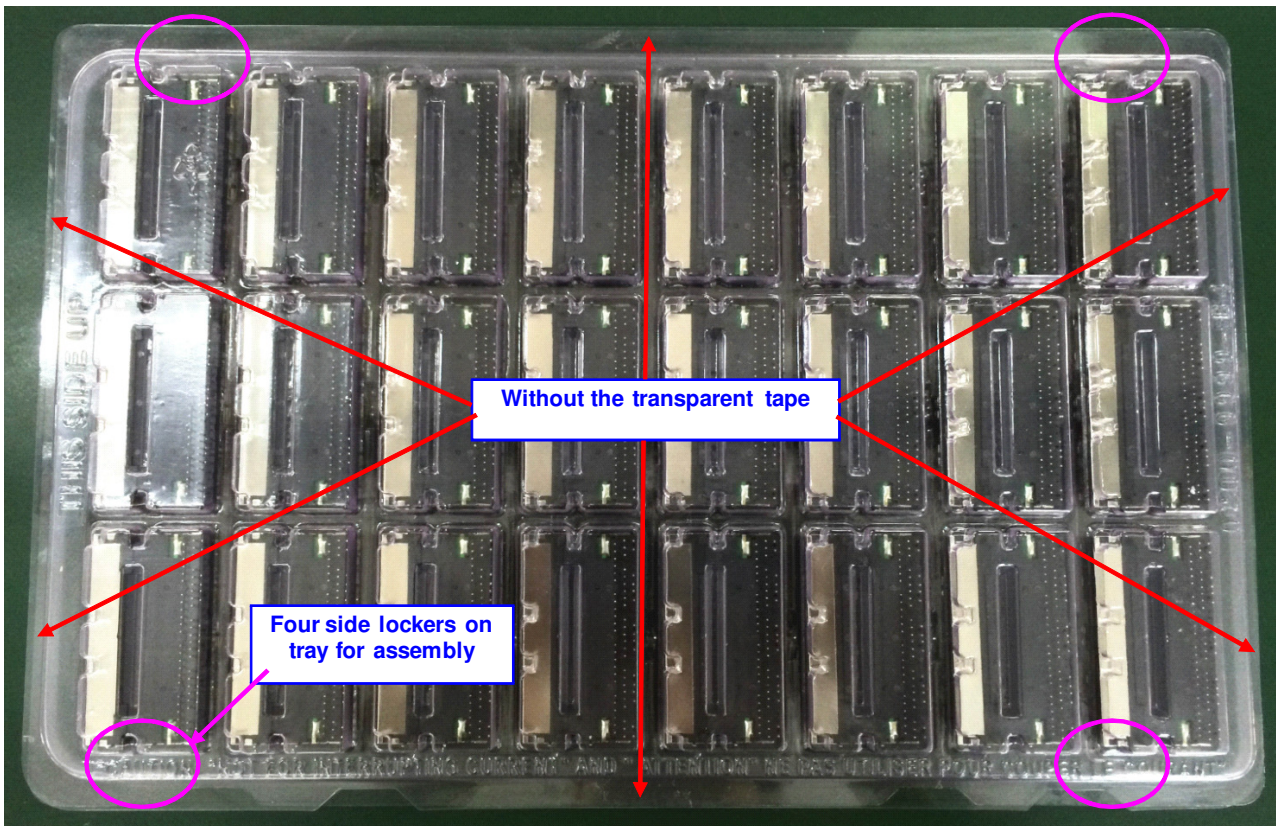
New process: cancel the transparent tape



Existing process: add the transparent tape in the tray packing



New process: cancel the transparent tape



Planned Timing and Implementation of Change: This change will be implemented after
September 30th 2014.

Impact on Quality and Reliability: None.

Availability of Qualification Data: None.

Remarks: None.

Signature: John Hess, ICM Product Manager

A handwritten signature in black ink, appearing to read 'J. Hess', with a long horizontal line extending to the right.

(Bel Representative)

Note: This form should be used if only for advising the customer.